

Sea Ice Conditions in Svalbard Fjords

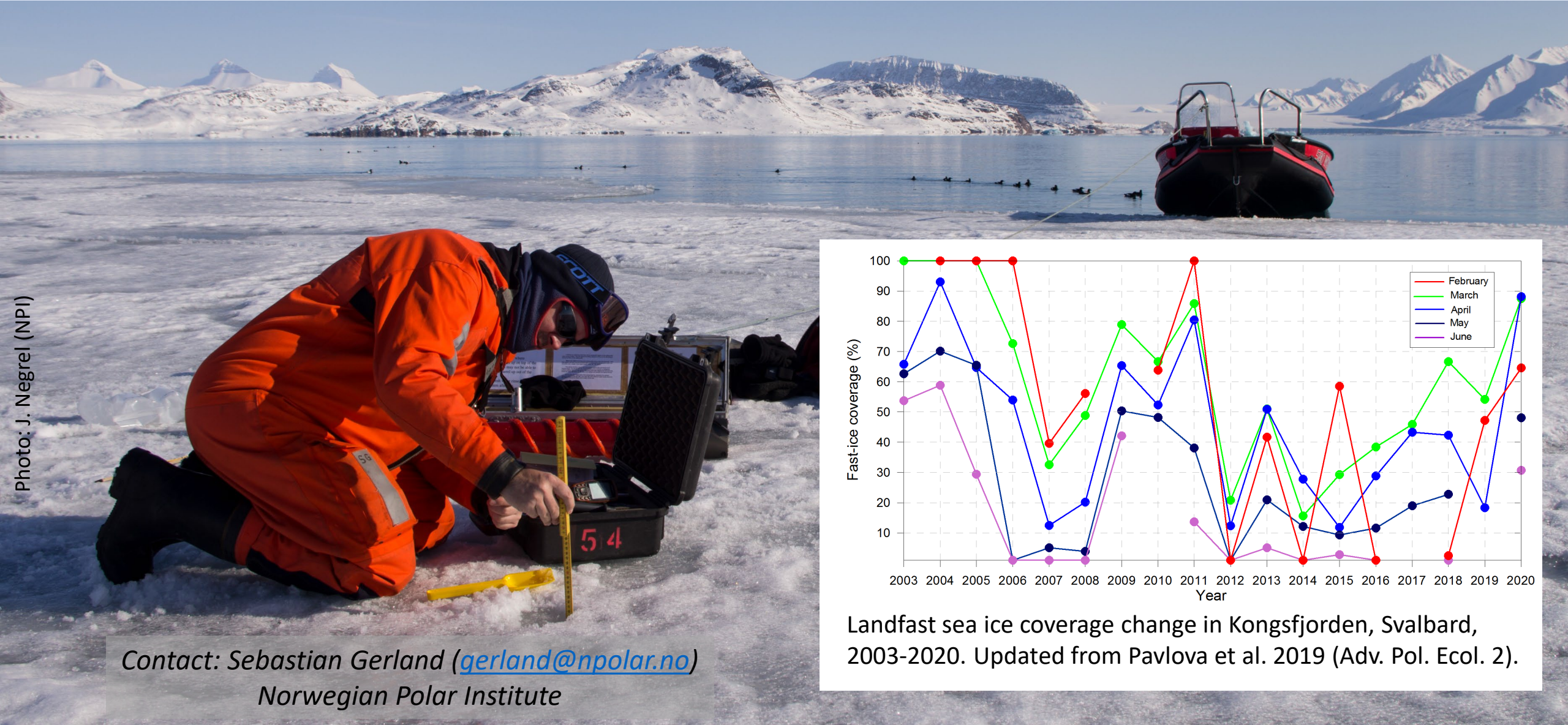
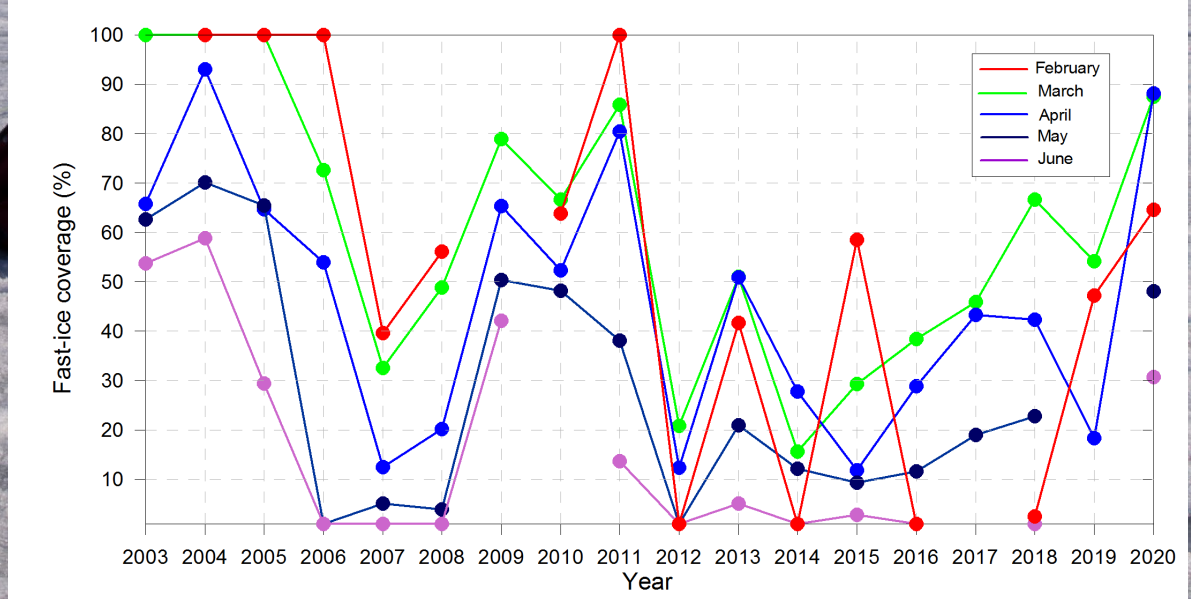


Photo: J. Negrel (NPI)



Landfast sea ice coverage change in Kongsfjorden, Svalbard, 2003-2020. Updated from Pavlova et al. 2019 (Adv. Pol. Ecol. 2).

Contact: Sebastian Gerland (gerland@npolar.no)
Norwegian Polar Institute